

UFJ institute Ltd.
HOSHIBA Kunio

Photograph (1) Photograph (2) take a photograph of a certain station in Japan. The yellow line runs over on a platform and under stairs. This is the block for guidance installed for the visually impaired person. The block installed in the end of a platform aims at fall prevention, and the block under stairs shows the beginning of stairs. Moreover, the block which exists in the center of a platform shows the route to an entrance.

In Japan, this guidance block for visually impaired persons is installed in everywhere centering on public space, such as a station.

There are the "Heart Building Law" enforced in 1994 and the "Traffic Barrier-free Law" enforced in 2000 in the background. The former is what imposed a duty of the barrier-free of public facilities, such as a public office, and a department store, an art museum, and the latter is the law which imposed a duty of barrier-free of a station, an airport, and road space.

Now, how can this block be felt? I think that there are an opinion referred to as very wonderful and an opinion that a block is conspicuous.

A station in Denmark

What is this?

Photograph (3) is the photograph taken at the station in Copenhagen in Denmark. A photograph of a floor was taken. Some of the pattern of a tile have slight unevenness. The height is several millimeters. In fact, this has played the role of the guidance block for visually impaired persons.

Photograph (4) is the scenery of the enclosure of a station. It does not understand at all where the block is. That is, the design of a block will be united as well as the construction design of a station, and a visually impaired person's guidepost will function, without a station twisting beauty disadvantage.

As compared with the station in Japan, it can be said that the station in Denmark is more wonderful.

Anxious one is whether this guidance block is helpful for a visually impaired person. In Japan, contrast is attached to color for the person with weak eyesight. Therefore, a block is yellow. Since a block of Denmark does not have contrast, it thinks in Japan that there are many people who make it a problem. However, there is no problem in Denmark.

A secret is in communication of a construction designer and a visually impaired person. The limit which does not spoil the beauty of a station, and the limit which is helpful for a visually impaired person were made to associate, and there was a process which draws the best method. It means that there had been an argument of many times.

Although the term about one year is required in order to design the station of such a size, the term will become longer if there is such a process. If completion time was decided, this process will become an obstacle and will be excluded. It seems that however, it is thought in Denmark that the man of a possible limitation many needs to agree since public space is the space which many men including the visually impaired person use. That is, construction is not started without agreement.

In a process, a visually impaired person also considers the design of a station. The architecture in Denmark saw scenery of Japan, and had said such a thing. " The station in Japan has consideration sufficient because of a

visually impaired person, and is wonderful. However, if there are many such yellow lines, don't you think that it is unsightly? Public space is not the institution only for a visually impaired person but everybody's institution. And the visually impaired person should also overlook beautiful space. If space benefits a visually impaired person ugly, I will think that they also become a disagreeable feeling. " This saying shows well the posture of Denmark which completes beautiful space in cooperation.

The way in Denmark

A function and beauty

Photograph (5) takes a photograph of the way in Copenhagen in Denmark. Two persons are crossing the pedestrian crossing. In the driveway, four lines of the granite in which a pedestrian crossing is shown are run over. This is also the good example with which the function which shows that it is a pedestrian crossing, without spoiling the scenery of a town was united.

Construction of Denmark

The design considered well

Then, let's introduce the good example of a construction design.

Photograph (6) is a training center . " 22222222centret" for a visually impaired. A visually impaired person stays about one week here, and when moving in towns, such as how to walk along a street, and how depending on which a bus rides, he learns required skill.

There are two towers. One of devices is in this. The tower is installed in the corner of a passage. It is the role of the tower to tell a visually impaired person about a corner of a passage. Since the role is operated effectively, the passage is hard so that the sound of shoes may sound. It is a design using the sound of the shoes which change with the height of a ceiling.

" The design of echo sound " is very helpful for a visually impaired person, although it, unless it is given, the function is not noticed for those who can see. It could be called an ultimate barrier-free design.

Of course, there is also a device for the person with weak eyesight. Since a corner of a street has top light, it serves as bright space. On the other hand, windows in linear passage are small and makes it gloomy space purposely. The contrast of light and darkness shows the position of a corner of a street.

" 22222222centret" means "The center a little bird sings" in Denmark. **Photograph (7)** is the photograph of a birdhouse put on the passage which bent in the shape of a crank. A visually impaired person may be noticing that it is in the place of a little bird which a little bird's song and has only one to this institution.

Photograph (8) is " Trapholt art museum " which exhibits the chair of the outstanding design. It is the unique atrium which can look at a chair, getting down from a slope slowly. The big pillar of the curve in a right end is an elevator. A wheelchair user will get down from a slope first, and return will use this elevator. An elevator is well united with the whole space design, attaches an accent to space conversely, and is raising the quality of space. If it is such elevators, I will think that those whose wheelchair is unnecessary also want to use.

The design technique

In order to produce an good design which was introduced until now, the communication with a disabled person is important.

First, it is important to fully grasp the difference between a disabled person and a healthy person. And if the difference is not considered to be the obstacle of a design but it considers as a "Egg" which produces a new design, it means standing on the starting line of a success. Furthermore, the argument with a disabled person was not considered to be troublesome work, but if the disabled person could consider the precious partner who gives the hint of a new design, he will begin to follow the way of a success. If many arguments are repeated and a design is considered in cooperation, the goal has a success.

And the goal is not only a wonderful design. The confidential relation with a disabled person should serve as the opportunity of a fresh experience which has not been noticed until now.

The social background of the good design

Then, why did it come to value the communication with a disabled person in Denmark?

It is a reason that it has many exchange programs with a disabled person in everyday life. If a disabled person is the existence which he does not know, although he may not notice considering the design for them, if it is its friend, it should consider eagerly.

The program in everyday life is entertainment and is an art. Just since it is pleasant, a man alternates.

The entertainments in a pool

Photograph (9) takes a photograph of an ordinary indoor pool. Usually, although it is a dreary pool, only for one week, such an ornament is performed and the atmosphere just like the bar or a dance hall is directed. The staff who works in the welfare facilities of an area, such as carer, is doing plan management as the volunteer. This is an event for the disabled person who cannot go to an ordinary pool. Not only a disabled person but the everyone of an area is to be able to use for Sunday which hits at the final day for one week. It is said that the space which is likely to be pleasant is popular and many men gather. It is said that there are also many organizations who visit from the Denmark whole country.

The music festival in woods

Photograph (10) is the pamphlet of the music festival held from 1986 every year. Mr. Evald Krog is a producer of this event and he is also serious muscular dystrophy. A measure of normalization will be taken in Denmark in the 1980s, and the severely handicapped person also returned from the disabled person institution called colony to the house. However, communication was not well completed with the men of a town, but it became the situation isolated on the contrary. This is the background of having planned the music event.

The outdoors event over two days has grown to be the famous event which will assemble 13,000 persons in 1996. Of course, anyone can participate in an event. Seemingly, there are also many people who touch a disabled person's earnest way of life availing of music, and are cured conversely.

As mentioned above, it introduced simply about the social background which produced the beauty and the

process of the construction of Denmark.

Especially an art promotes various people's exchange. An art gives an opportunity to accept "a difference" to be a difference to us, and becomes the tool which something new is made to notice. If an art is considered to be "the bonds with the play heart" which build our new future, I will think that life becomes more pleasant.



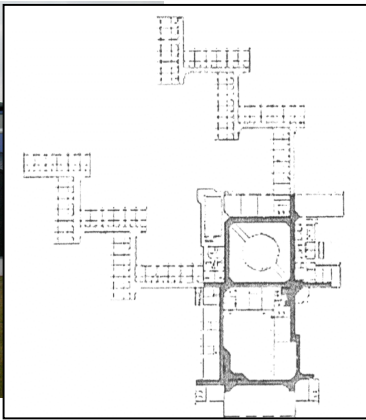
Photograph (1) black color Photograph (2) black color



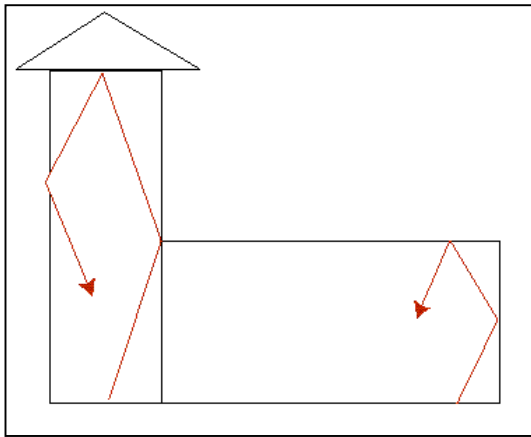
Photograph (3) black color Photograph (4) black color



Photograph (5) black color



Photograph (6)



Photograph (7)



Photograph (9)



Photograph (8)



Photograph (9)



Photograph (9)



Photograph (10)